

FOX FOUNDRY LTD

Manufacturer of high quality castings in Bronze, Cast Iron, Cast Steel, Aluminum
Soft lead, Gate valves, Warren Morrison valves, Saunders valves, Short collar
Mill balls and Clypeps

COMPANY PROFILE



Plot No. 6364, P.O. Box 21070
Kitwe - Zambia

Mobile: +260 966 908 888 / +260 977 908 888

Email: fox.foundry@airlinkzambia.com

www.foxfoundry.co.zm



**FOX FOUNDRY LTD MANAGING DIRECTOR
MR. CHITI CHINGAMBO
WITH THE WORK FORCE
OF
150 WORKERS**

FOX FOUNDRY LTD

Manufacturers of Patterns & Moulds – Ferrous & Non Ferrous Castings
White Metal, Cast Spares and Solders

Plot No. 6364,
P.O. Box 21070
Kitwe - Zambia

Mobile: +260 966 908 888 / +260 977 908 888
Email: fox.foundry@airlinkzambia.com
www.foxfoundry.co.zm

Bronze
Brass
Cast iron
Copper
Cylpeps

COMPANY PROFILE

INTRODUCTION

Fox Foundry Limited (FFL or the Company) was established and incorporated on 17th July 2006 and was issued with the company registration number 62945.

Due to the expansion in the mining sector, which triggered a lot of activities in engineering companies, the **FFL** Directors decided to set up a Foundry and a machine shop to be casting and machine various items for the mines as well as engineering companies. Prior to the official registration of the company, trial runs for the under listed products were done for the period of 7 months to ensure that the final products meets the requirements of the mining industry and engineering companies.

We procured one tone capacity Electric Induction Furnace to be installed at our new plant in Chambishi along Kitwe - Chingola road near Chambishi Metals. Production of high quality mill balls is expected to start very soon.

Fox Foundry Ltd has a well equipped machine shop with modern CNC lathe, CNC Milling machines and highly qualified Machinists.

LOCATION

The Company is situated at Plot No.6364, Blantyre Road, in the light industrial area of Kitwe. The property is owned by FFL, unencumbered and valued at K15.5 billion.

THE FOUNDRY SECTION

Offers the following services:

- **Casting - cast steel & cast iron**
- **Bronze casting**
- **White metal babbiting 11R & 175**
- **Machining**

EXTERNAL LINE BORING SERVICES ON SITE

- **Full CNC Portable Line Boring Machine** the company offers external line boring services on site and experience the state of the art machine just recently imported.

METAL FABRICATION SECTION & CIVIL ENGINEERING

- Approved coded welders and boiler makers experts in fabrication of steel and stainless tanks, steel structures, piping and plant maintenance
- We are also:

HDPE EXPERTS

Construction of workshops

DIRECTORS / SHARE HOLDERS

FFL is wholly owned by Zambians whose details are outlined below:

<u>Name</u>	<u>NRC No.</u>	<u>Position</u>
Mr. Ching'ambo Chiti	145736/44/1	Director
Ms. Anne Chiti	358774/67/1	Director

MANAGEMENT

The management of the Company comprises of the following:

<u>Name</u>	<u>Position</u>
1. Mr. Ching'ambo Chiti	Executive Chairman
2. Mr. Francis Sicalwe	Consultant (Mechanical Engineer)
3. Mr. Chanda Fred	Track Manager
4. Mr. Henry Kaoma	Foundry Estimator
5. Mr. Sichone Tenson	Accountant

LAWYERS

Ellis & Company
P.O. Box 21500
KITWE

AUDITORS

Lumba and Company
Kitwe

BANKERS

Stanbic Bank (Z) Limited
Kitwe Branch
KITWE



MELTING CAST IRON



POURING BRONZE



COUPLA FURNACE 2 TON CAPACITY



CAST IRON CASTING



MELTING BRONZE



BRONZE CASTING



BRONZE CASTING



ASSORTED SIZES OF BRONZE BILLETS



PROCURED ELECTRIC INDUCTION FURNACE TO BE INSTALLED AT CHAMBESHI PLANT



GLADING CHAMBESHI PLANT FOR INSTALLATION OF ELECTRIC INDUCTION FURNACE



MEN AT WORK



BEARING COVER



MILLING MACHINE



LATHE MACHINE



HEAVY DUTY DRILLING MACHINE



LATHE MACHINE



THREAD MAKING MACHINE



FULL CNC PORTABLE LINE BORING MACHINE



POWER BAND SAW CUTTING MACHINE



MILLING MACHINE



HEAVY DUTY HORIZONTAL BORER



MACHINING OF BEARING HOUSING ON HORIZONTAL BORER



MANUFACTURED BARREL AGITATORS FOR MOPANI



FINISHED BEARING HOUSING FOR MOPANI MINE



ECCENTRIC BEARING READY FOR DELIVERY TO MOPANI MINE



MACHINING MOPANI WHITE METAL BEARINGS



MOPANI WHITE METAL BEARINGS READY FOR DELIVERY



ASSORTED PRODUCTS MANUFACTURED BY FOX FOUND



BRONZE WARE PLATE

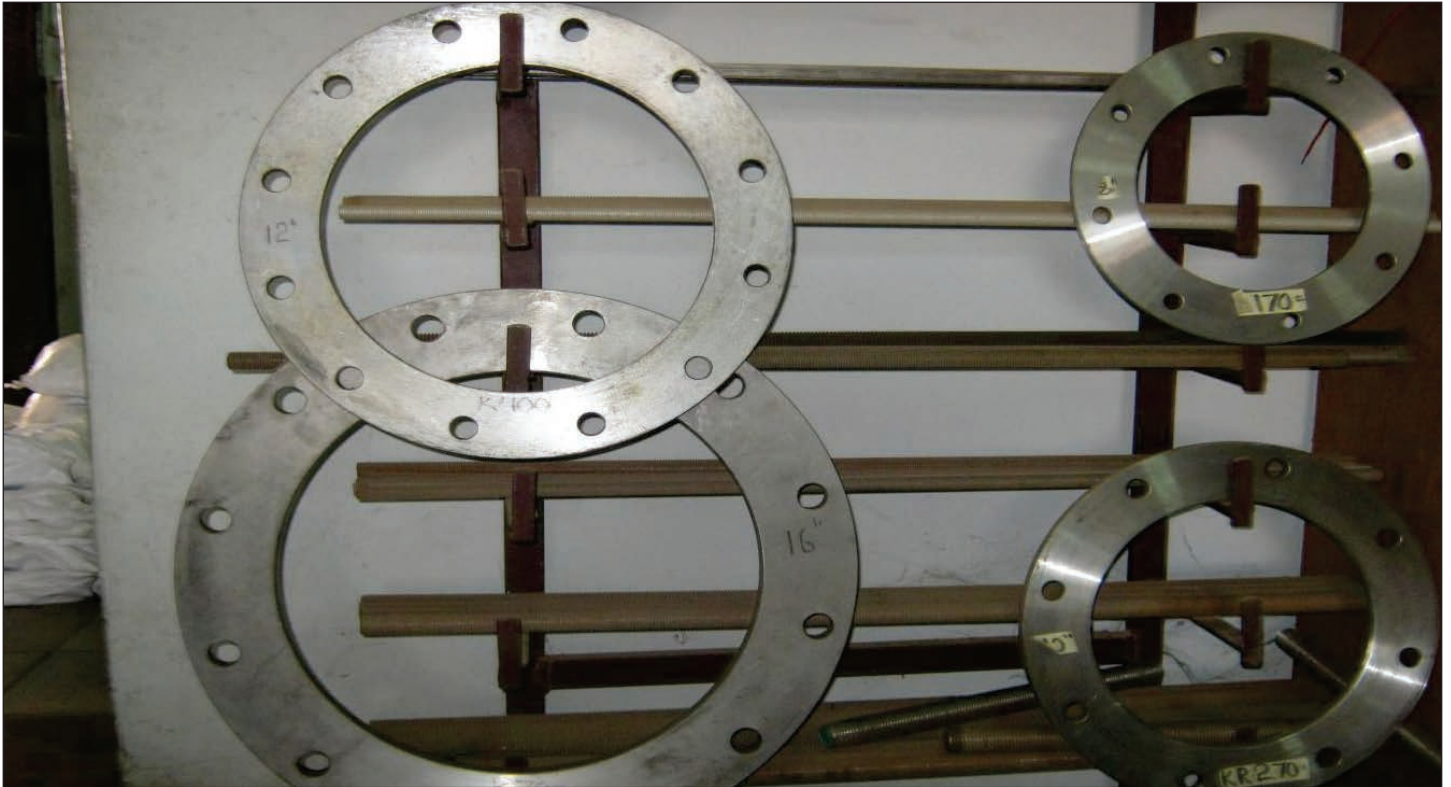


BRONZE BUSHES



HEAD BUFFERS FOR MOPANI





DIFFERENT SIZES OF FLANGES



BRONZE LINERS



BRONZE JOURNAL BEARING



ELBOW PIPE



ELBOW PIPES AND DOOR HINGES



4" AND 6" VALVES MANUFACTURED BY FOX FOUNDRY LTD



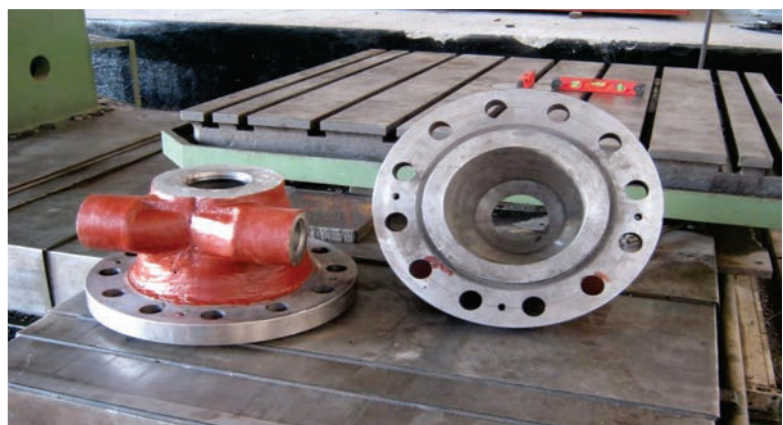
SCALVENGER VALVES



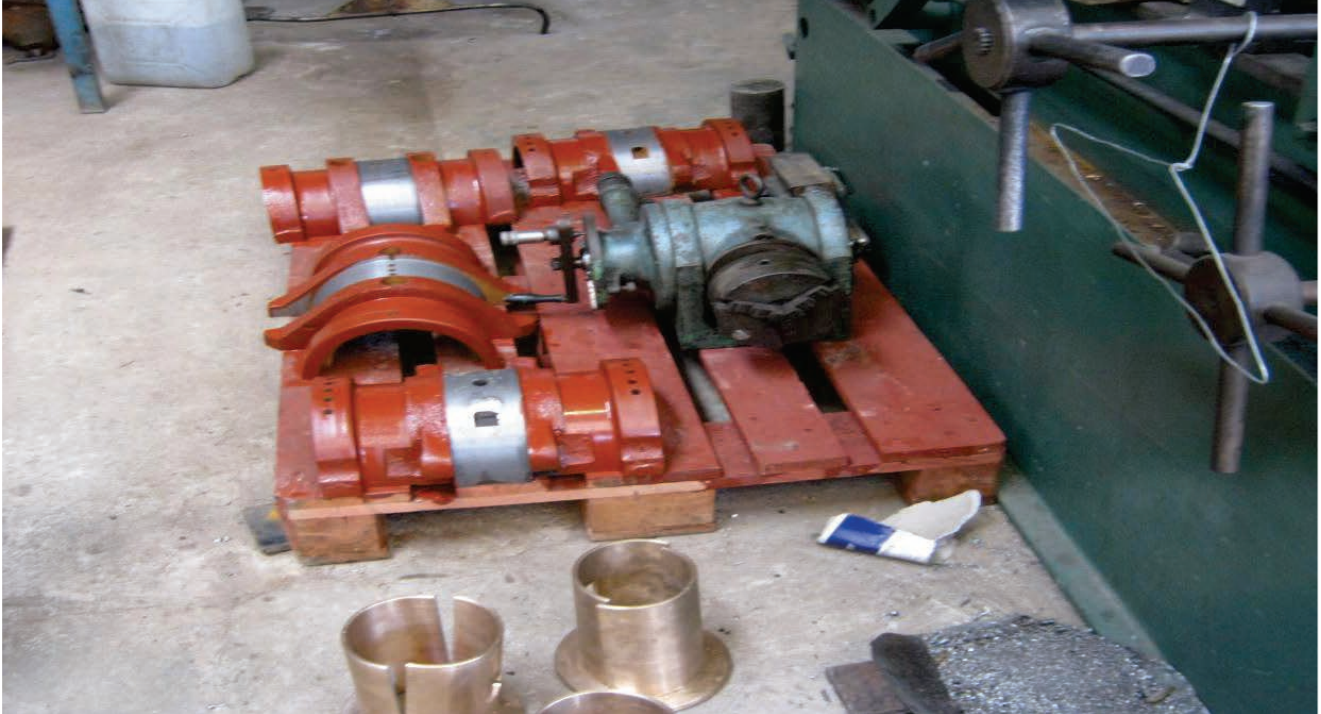
CAST IRON GUIDE ROPES



CAST IRON ROLLERS



**LOWER NOZZLE BLOCKS FOR LUSIWASI
ZESCO POWER PLANT**



WHITE METAL BEARINGS FOR THE WINDERS



CABLE GLANDS



HEAVY DUTY ALLUMINIUM MANHOLE COVER



ALUMINIUM MANHOLE COVER LIGHT DUTY



HEAVY DUTY WELDING MACHINE



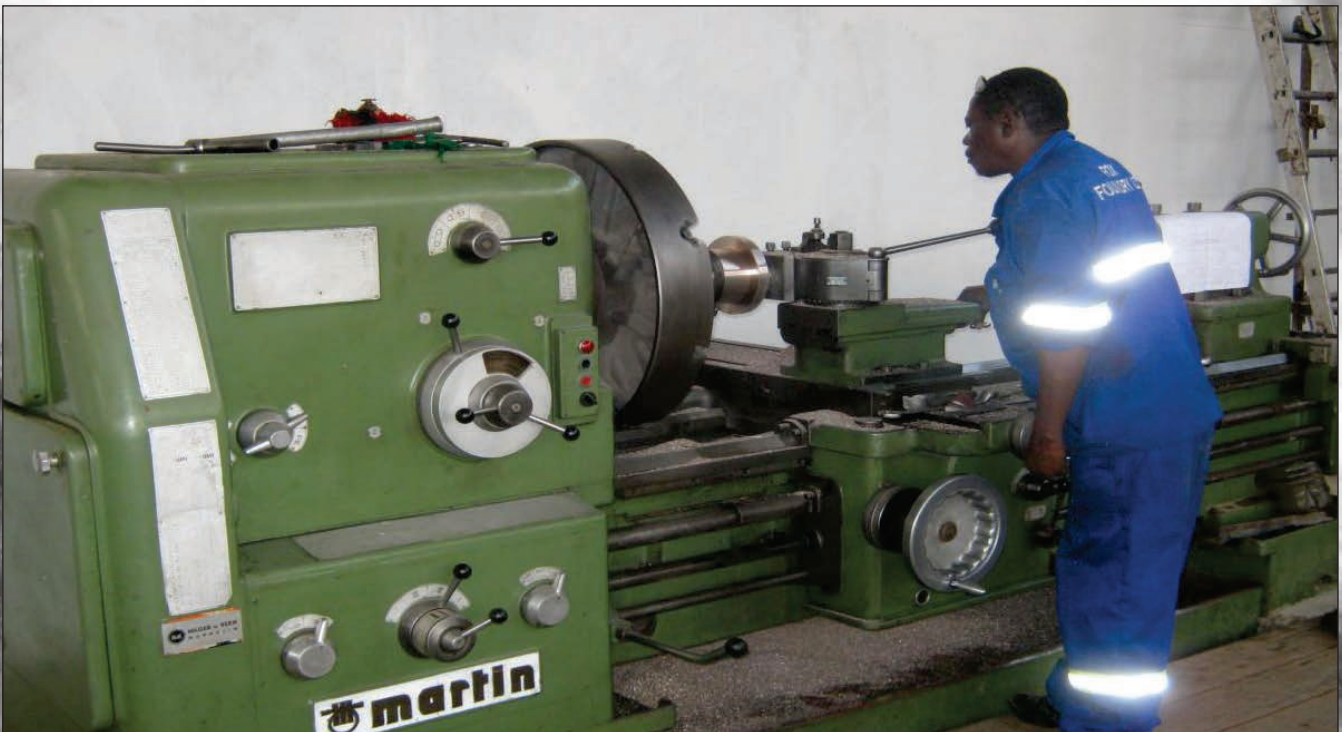
HEAVY DUTY CNC LATHE MACHINE FRONT VIEW - 1997 MODEL



FABRICATED DIESEL TANKS FOR DANGOTE CEMENT PLANT

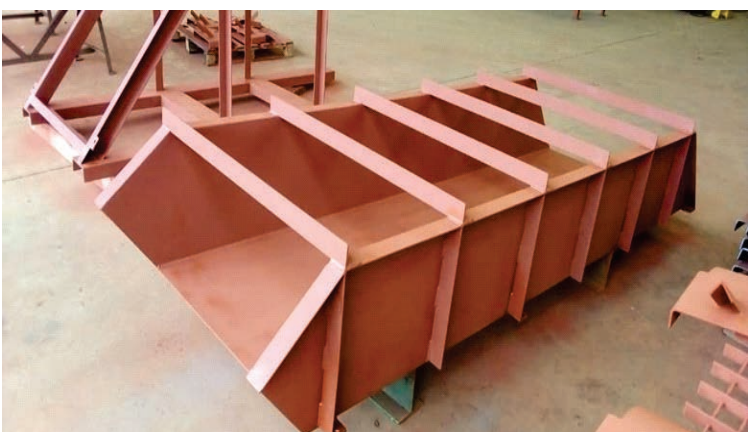
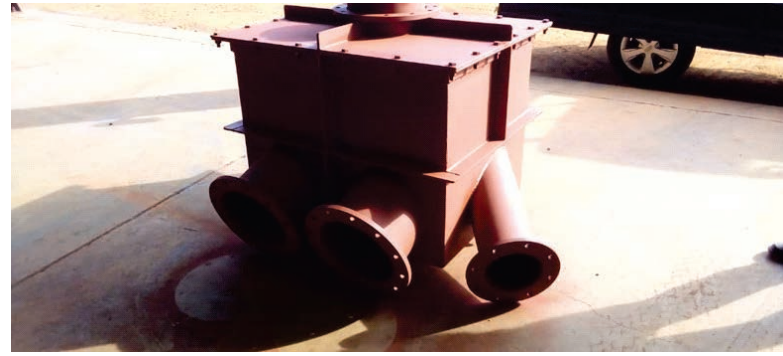
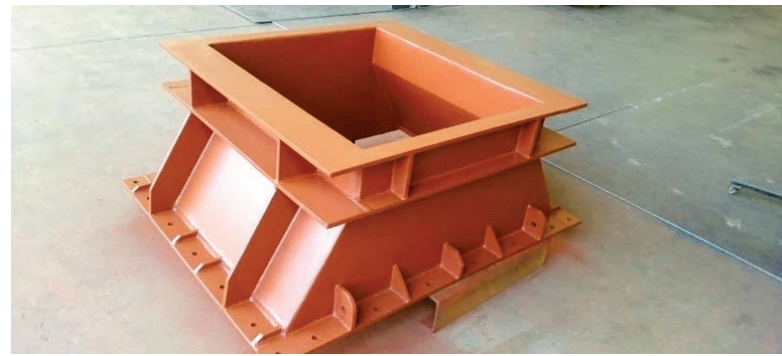



LINE BORING OF BOOM STICK AT CHINESE HYDRO PLANT



MARTIN LATHE MACHINE

FOX FOUNDRY LTD - Fabrication Section





FOX FOUNDRY LTD